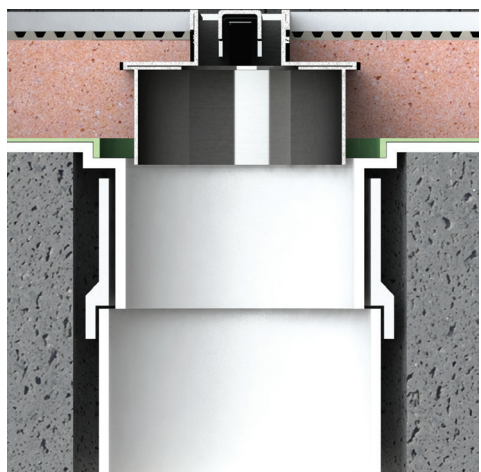
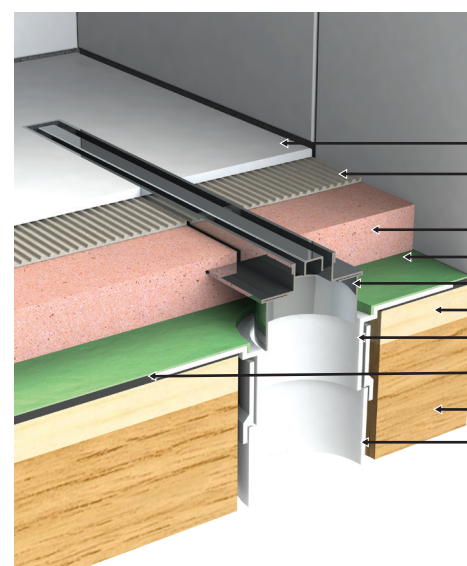


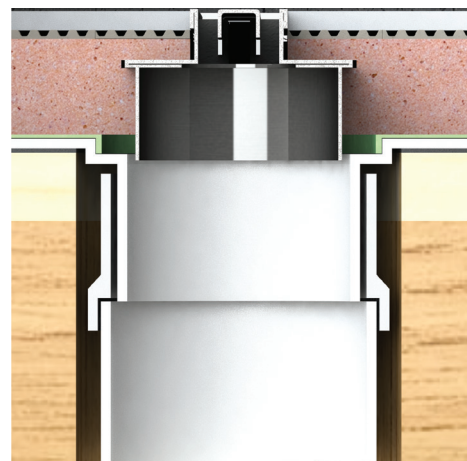
CONCRETE FLOOR INSTALLATION



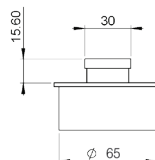
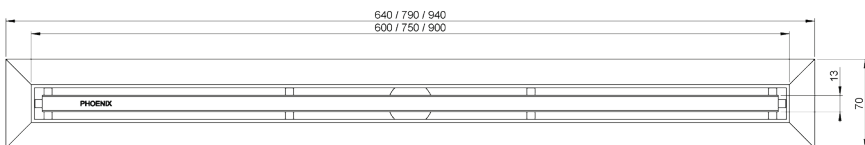
- 1** Install drainage flange ensuring it aligns with plumbing underneath the channel, then apply waterproof membrane. Waterproof membrane can be installed above or below screed.
- 2** A layer of Mortar/Screed is applied ensuring a 15mm per metre fall.
- 3** The Slimline channel drain is put into place lining up outlet with drainage flange. The height of drain should adjust to necessary level (tile thickness plus adhesive) above the mortar/screed.
- 4** Install tiles up to edge of slimline drain allowing for 2mm gap which is filled with silicone sealant.



TIMBER JOIST FLOOR INSTALLATION



- 1** Prepare surface and install tile underlay sheeting. Install drainage flange ensuring it aligns with plumbing underneath the channel, then apply waterproof membrane. Waterproof membrane can be installed above or below screed.
- 2** A layer of Mortar/Screed is applied ensuring a 15mm per metre fall.
- 3** The Slimline channel drain is put into place lining up outlet with drainage flange. The height of drain should adjust to necessary level (tile thickness plus adhesive) above the mortar/screed.
- 4** Install tiles up to edge of slimline drain allowing for 2mm gap which is filled with silicone sealant.



WARRANTY:

Please refer to the full warranty statement enclosed with the product before installing. Or visit www.phoenixtapware.com.au to download a copy.

MAINTENANCE AND CARE:

- Products should be cleaned with mild liquid detergent or soap and water.
- Do not use cream cleaners or citrus based cleaning products, as they are abrasive.
- Use of unsuitable cleaning agents may damage the surface. Any damage caused in this way will not be covered by warranty.

DISCLAIMER:

While we aim to ensure the specifications shown are correct at the time of printing, Phoenix Tapware reserves the right to make modifications without prior notice. Always use the physical product measurements for mark-ups and roughing-in as the line drawing shown may differ from the actual product over time.

*All measurements are shown in millimeters.